

SLEEVE FRONT

18

12

15

Stay
stitch

SLASH & SPREAD HERE

1. Stay Stitch
2. Pivot

14

SLEEVE BACK

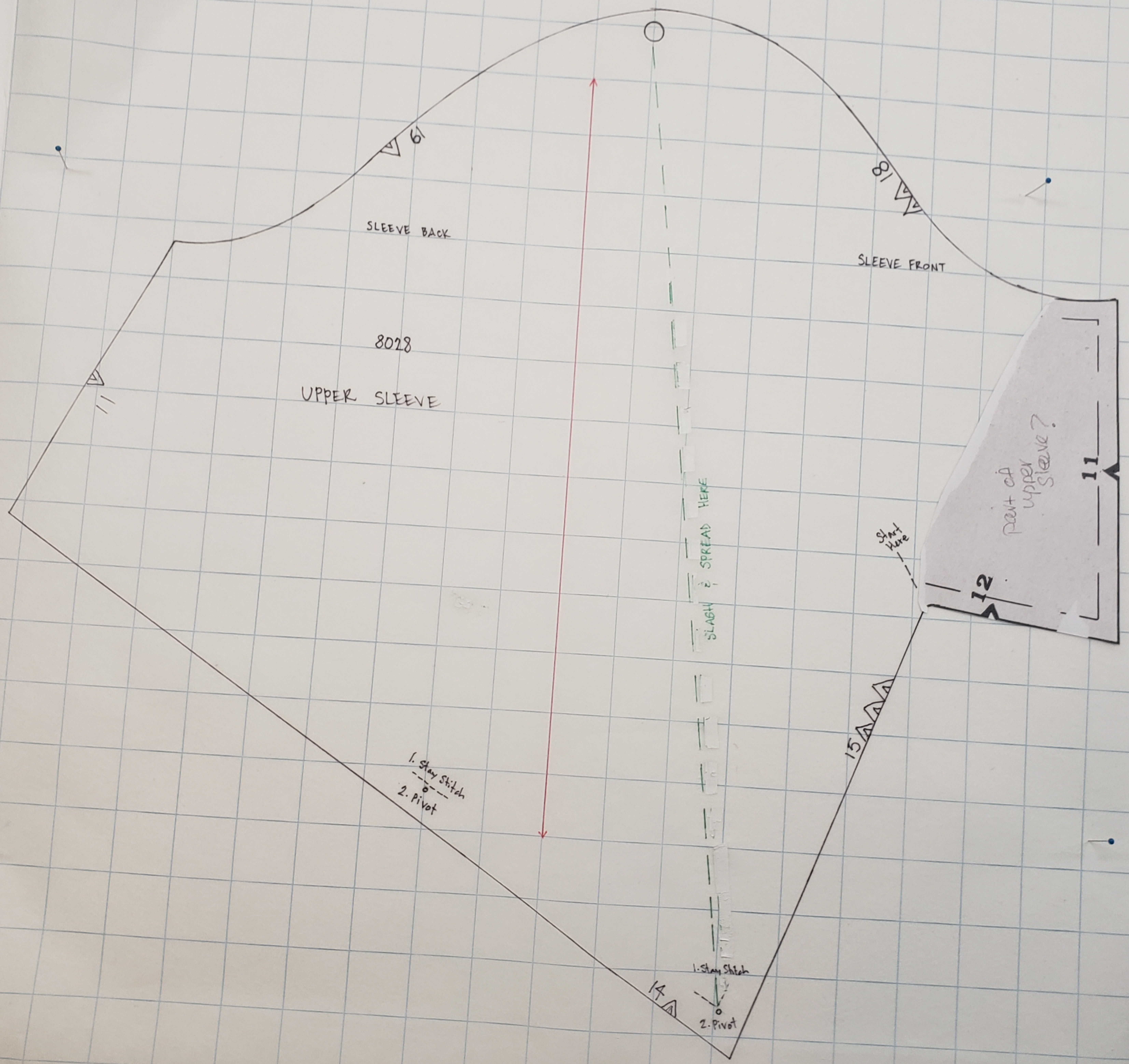
19

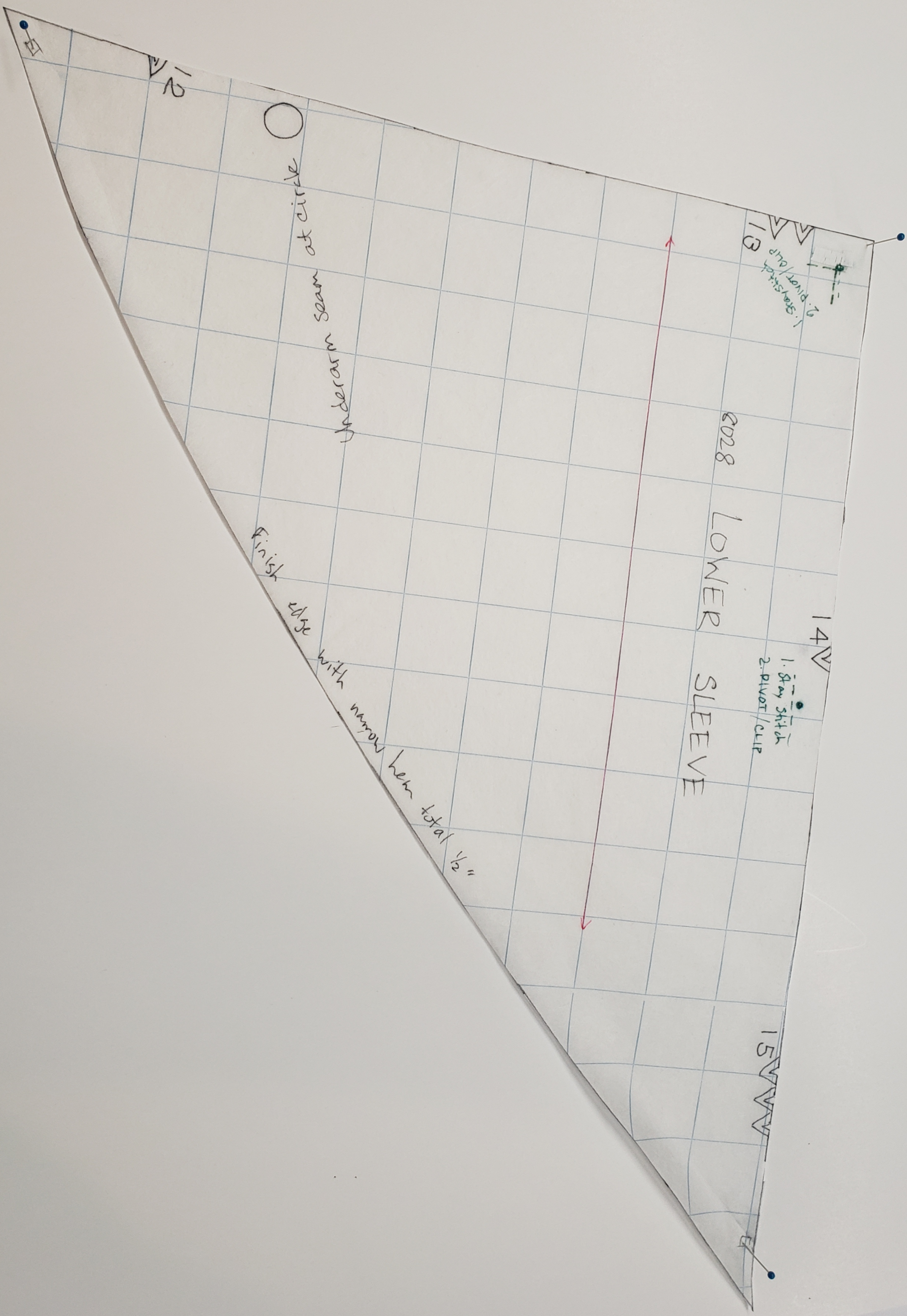
8018

UPPER SLEEVE

1. Stay Stitch
2. Pivot

11





13
1. STAYSIDE
2. PIVOT/CLIP

8028

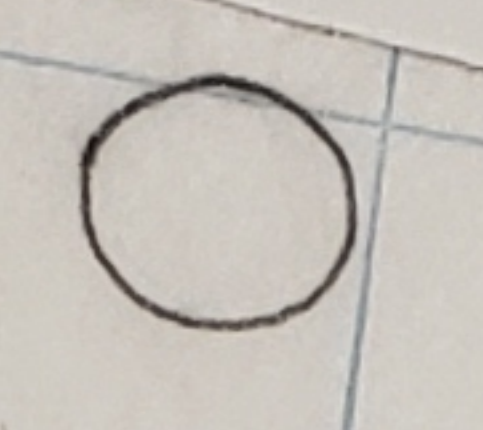
LOWER

SLEEVE

14W

1. 8" STAYSIDE
2. PIVOT/CLIP

15W



at circle

Underarm seam

Finish edge

with narrow hem total 1/2"