



GASP Archives - Copyright 2025

McCall 8028 (1935) PDF Size 16 Bust 34 Waist 28 Hip 37

PDF file 1 of 2:

- Envelope front and back
- One page instruction sheet printed both sides
McCall Complete Catalogue September 1935
cover reference and page 107 pattern reference.

PDF file 2 of 2:

- Ten printed pieces.

PDF file is A0 format and may print A0 with Adobe poster/tiling instructions. File is left open for personal use with Adobe Illustrator / InkScape or similar. Not to be resold or offered for free on other websites/social platforms.

IMPORTANT $\frac{3}{8}$ inch is allowed on all seam-edges. All seams are indicated by broken lines; all cutting lines by continuous double lines. A narrow margin surrounds each pattern piece, making it easier to cut accurately. **Cut pattern and material together through the white center of the double line. The margin falls away as you cut through pattern and material.** Every mark is important for the construction, so before removing the pattern from the material, mark carefully with tracing wheel, tailor's chalk or thread markings.

United States Patents Nos. 1,387,723 and 1,527,518. Foreign Patents and Pending United States and Foreign Applications. Copyright 1934, by The McCall Co.

MCCALL

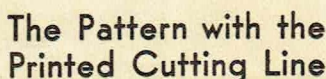
PRINTED
PATTERN



80 28 SIZE
Ladies' Misses' Dress 50c **16**

1062

34



- I How to adjust this pattern to your measurements
- II Cutting layouts for this size
- III Assembling and sewing guide
- IV Finishing details

MATERIAL REQUIRED	Sizes	12	14	16	18	36	38	40	42	
View A—Two Materials										
Waist, 35 Inch Material (Without nap).....		2 $\frac{1}{8}$	2 $\frac{1}{4}$	3 $\frac{1}{4}$	2 $\frac{3}{8}$	2 $\frac{3}{8}$	2 $\frac{1}{2}$	2 $\frac{5}{8}$	2 $\frac{5}{8}$	yds.
" 39 " " ".....		1 $\frac{3}{4}$	1 $\frac{3}{4}$	1 $\frac{7}{8}$	1 $\frac{7}{8}$	1 $\frac{7}{8}$	2 $\frac{1}{8}$	2 $\frac{1}{4}$	2 $\frac{1}{4}$	"
Skirt and { 35 In. Mat. (Without nap).....		2 $\frac{5}{8}$	2 $\frac{3}{4}$	2 $\frac{7}{8}$	3 $\frac{1}{8}$	3 $\frac{1}{8}$	3 $\frac{1}{4}$	3 $\frac{1}{4}$	3 $\frac{1}{4}$	"
Lower Sleeve 39 " " ".....		2 $\frac{1}{2}$	2 $\frac{1}{2}$	2 $\frac{5}{8}$	2 $\frac{5}{8}$	2 $\frac{5}{8}$	2 $\frac{7}{8}$	2 $\frac{7}{8}$	2 $\frac{7}{8}$	"
View B—One Material										
35 Inch Material (Without nap).....		4 $\frac{1}{2}$	4 $\frac{5}{8}$	4 $\frac{3}{4}$	5 $\frac{1}{8}$	5 $\frac{1}{8}$	5 $\frac{1}{4}$	5 $\frac{5}{8}$	5 $\frac{5}{8}$	"
39 " " ".....		3 $\frac{7}{8}$	4	4 $\frac{1}{8}$	4 $\frac{1}{2}$	4 $\frac{1}{2}$	4 $\frac{3}{4}$	4 $\frac{3}{4}$	4 $\frac{3}{4}$	"
View C—With Long Sleeves										
35 Inch Material (Without nap).....		4 $\frac{1}{2}$	4 $\frac{5}{8}$	4 $\frac{3}{4}$	5	5	5 $\frac{1}{4}$	5 $\frac{5}{8}$	5 $\frac{3}{4}$	"
39 " " ".....		4	4 $\frac{1}{8}$	4 $\frac{1}{4}$	4 $\frac{5}{8}$	4 $\frac{5}{8}$	4 $\frac{3}{4}$	4 $\frac{3}{4}$	4 $\frac{7}{8}$	"

GASP Archives

Bust	30	32	34	36	36	38	40	42	ins.
*Hip (7" below natural waistline).....	33	35	37	39	39	41	43	45	"
**Fin. length from nat. waistline, about.....	36	36½	37	37	37	37	37	37	"
Width at lower edge, about.....	1⅞	1⅞	2	2	2	2⅛	2⅛	2¼	yds.

Satin Crepes Taffeta Uncut Velvet Heavy Sheer Crepes
Faille Muslin Alpaca Gingham Bengaline Moire
Made from silk, cotton, rayon or other synthetic fibers.

**1 inch hem allowed

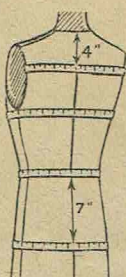
McCALL CUT AND SEW GUIDE

8028

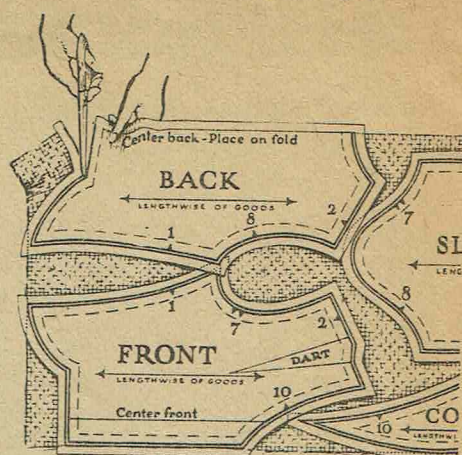
SIZE 16

STANDARD
BODY MEASUREMENTS
FOR THIS SIZE

BUST MEASURE . . . 34
WAIST MEASURE . . 28
HIP MEASURE . . . 37
ACROSS BACK . . . 14

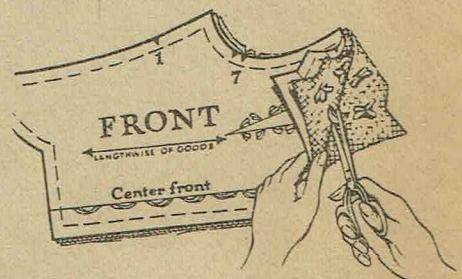


HOW TO CUT



Cut pattern and material through the white center of the double line. Do not cut off the margin before cutting material. The margin falls away as you cut through pattern and material.

HOW TO MAKE TAILOR'S TACKS



Make tailor's tacks before removing the pattern after garment is cut. With double thread, baste through pattern and both layers of material, forming loops. Clip each loop so as to be able to remove the pattern. Then raise the upper layer of the material slightly and clip through center of threads as illustrated. A tracing wheel may be used on hard cotton materials.

I. HOW TO ADJUST THIS PATTERN TO YOUR MEASUREMENTS

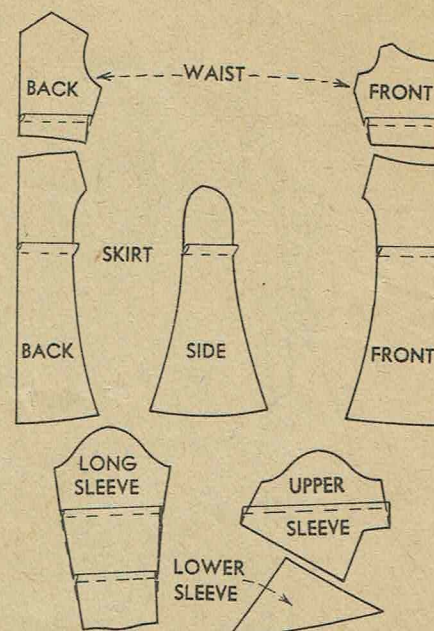
Before cutting, compare your measurements with the standard measurements for this size, and if necessary, adjust the pattern as shown below.

8028

HOW TO SHORTEN OR LENGTHEN PATTERN

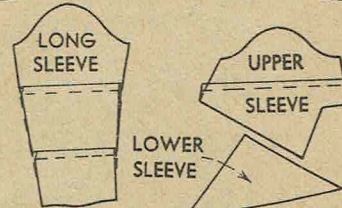
To shorten -- Make corresponding tucks across pattern above the waistline and below the hip as illustrated.

To lengthen -- Slash and spread in the same places.



FOR SLEEVE

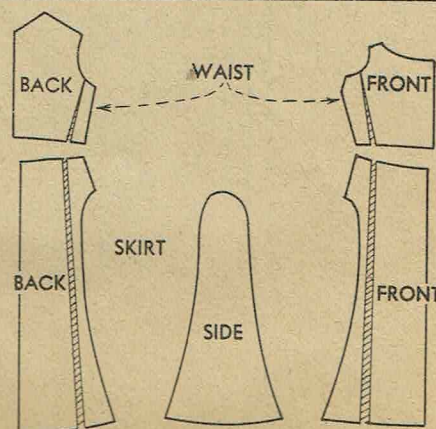
Shorten or lengthen either style of sleeve above and below the elbow.



FOR LARGER HIP

Slash pattern from lower edge to armhole near underarm seam, and spread necessary amount at hip.

For comfortable fit -- The pattern should measure about 1 1/2" more than the hip measure.

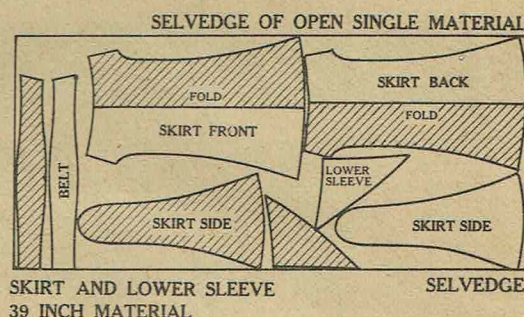
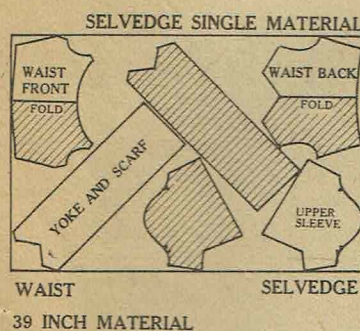
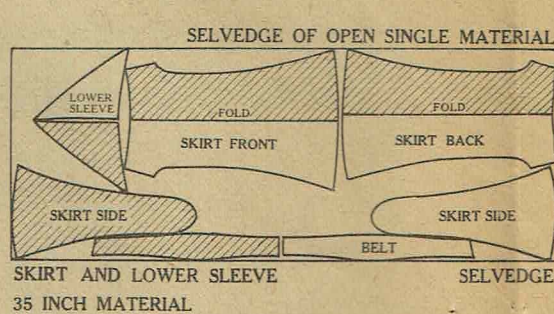
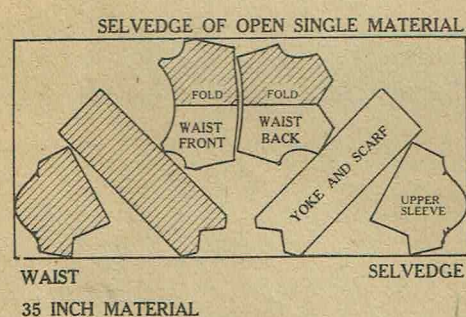


II. CUTTING LAYOUT FOR THIS SIZE

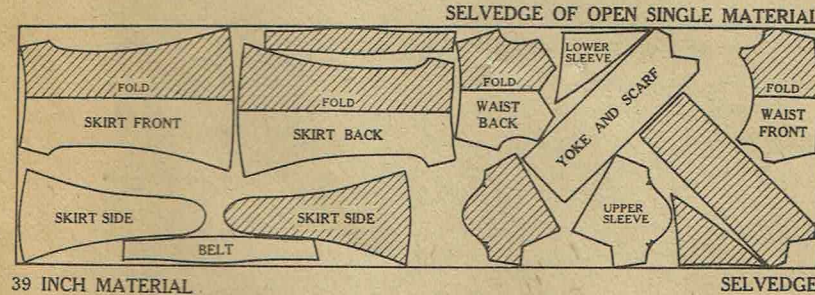
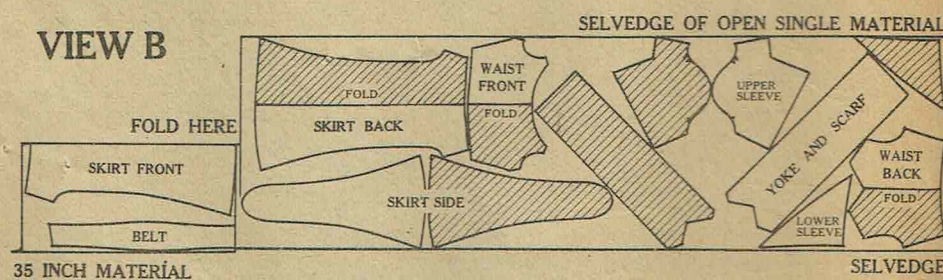
The diagrams below show how to lay the pattern pieces on the material. Pin the pattern pieces on material and cut* pattern and material together through the white center of the double line. The margin falls away as you cut through pattern and material. *See diagram above on "How to Cut."

IMPORTANT -- The pattern pieces, shaded in the diagrams, are to be laid face down.

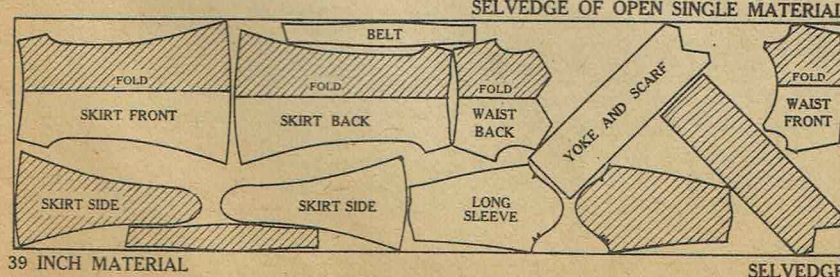
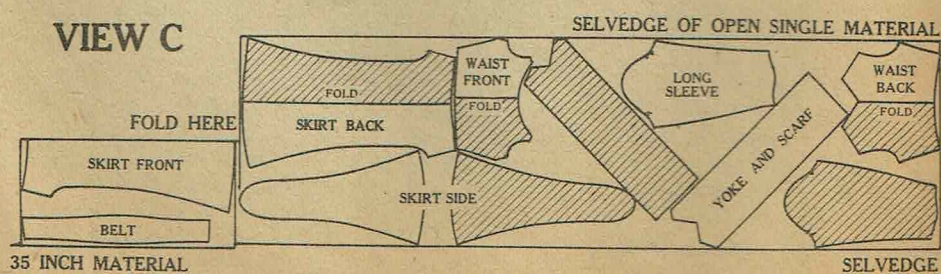
VIEW A



VIEW B

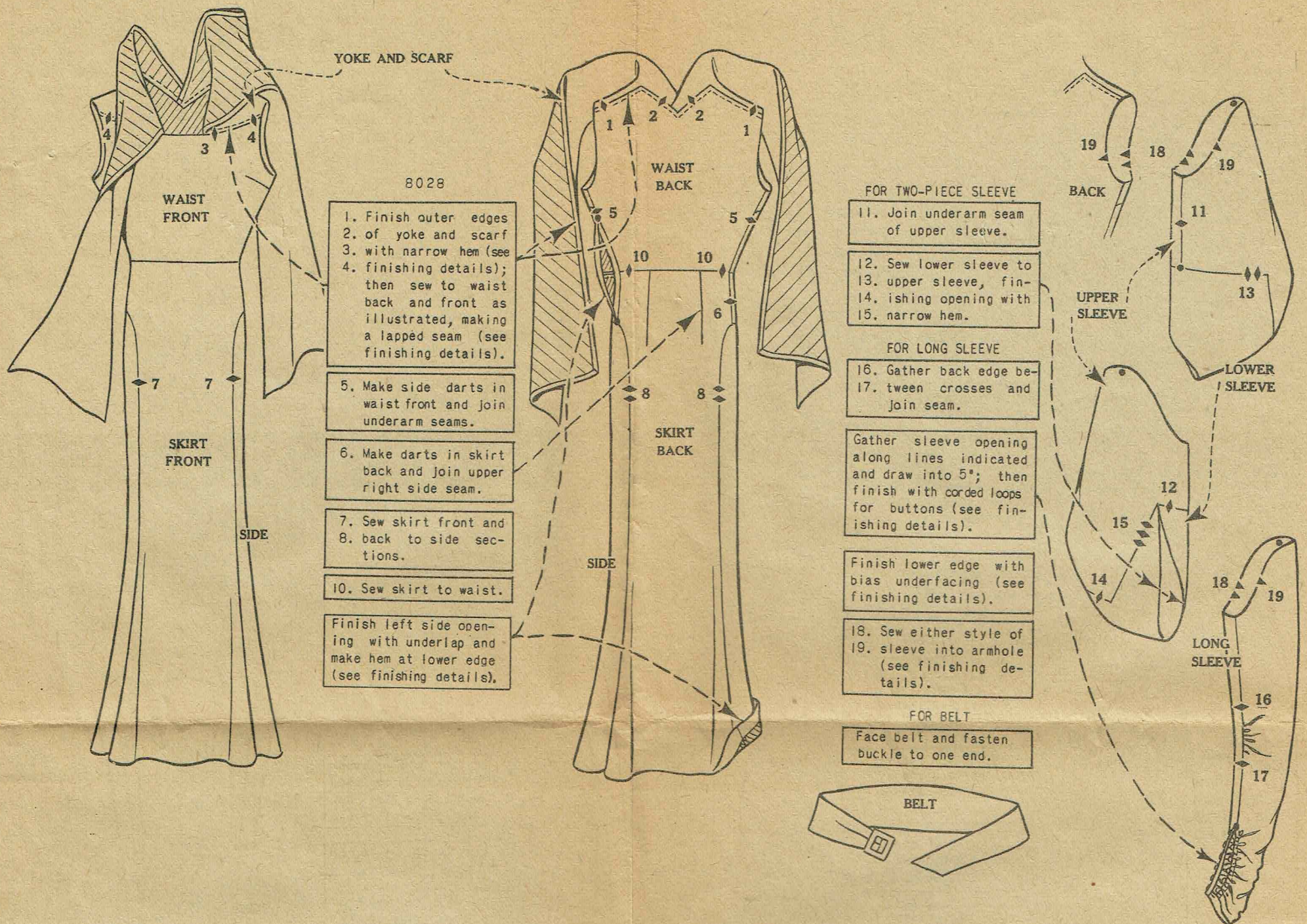


VIEW C

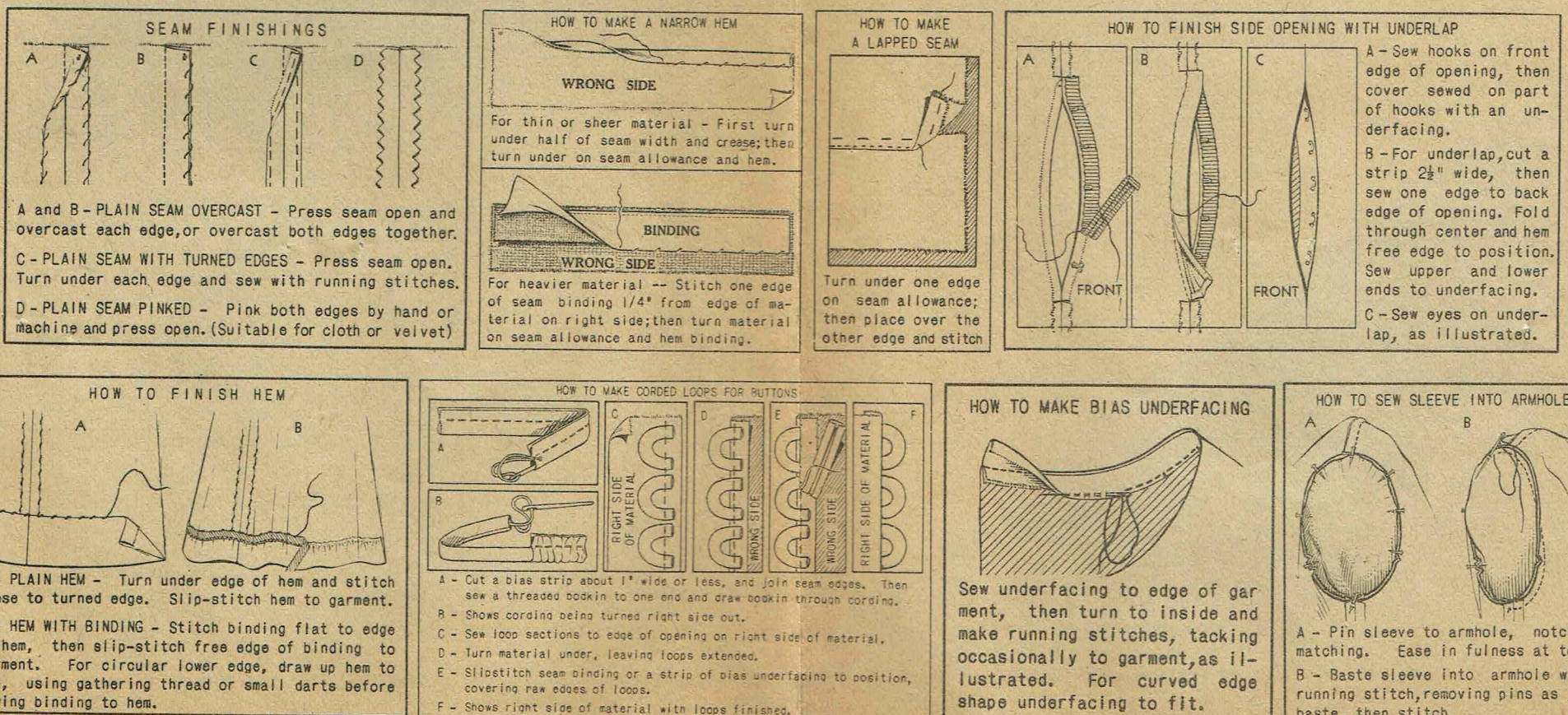


III. ASSEMBLING AND SEWING GUIDE

Join the seams by matching the corresponding notches. The notches in the pattern are numbered in the order in which the seams should be joined.



IV. FINISHING DETAILS



MCCALL

PRINTED PATTERNS

SEPTEMBER
1935

Complete Catalogue

THE MCCALL COMPANY
• PUBLISHERS •
230 PARK AVENUE
NEW YORK • N.Y.

CHICAGO • ATLANTA • DALLAS
DAYTON • SAN FRANCISCO
• TORONTO, CAN • LONDON, ENG.





7981



A

8054

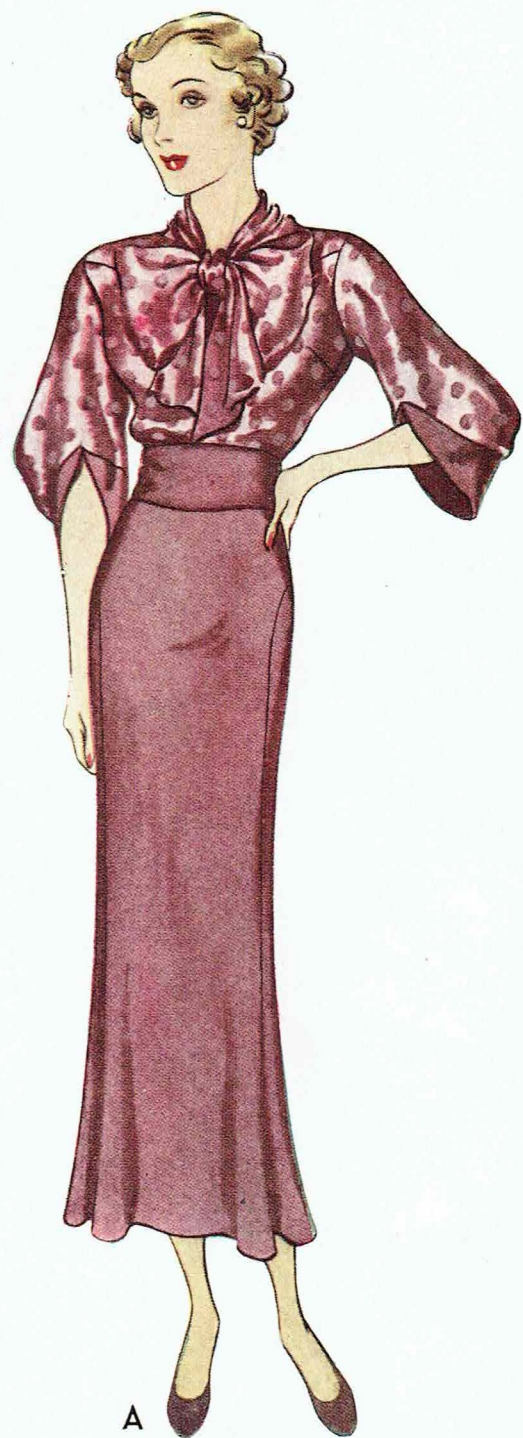
McCALL 7981—Ladies' and Misses' Dress. Price, 45 cents. Cut in 8 sizes, 12, 14, 16, 18, 36, 38, 40, 42. Size 36, View A, dress, $4\frac{3}{8}$ yds. 35 ins. wide, $4\frac{1}{8}$ yds. 39 ins. wide or $2\frac{7}{8}$ yds. 54 ins. wide, collar, $\frac{1}{2}$ yd. 35 or 39 ins. wide. Width around bottom, about 2 yds.

McCALL 8054—Ladies' and Misses' Dress. Price, 45 cents. Cut in 9 sizes, 14, 16, 18, 36, 38, 40, 42, 44, 46. Size 36, View A, 4 yds. 35 ins. wide or $3\frac{3}{4}$ yds. 39 ins. wide; View B, $3\frac{7}{8}$ yds. 35 ins. wide, $3\frac{1}{2}$ yds. 39 or $2\frac{3}{8}$ yds. 54 ins. wide. Width, about $1\frac{1}{2}$ yds.



A

7970



A

8028



A

7981



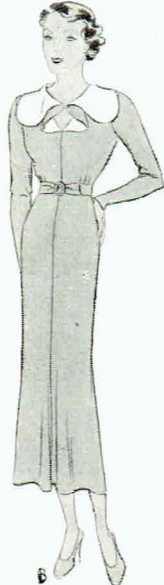
B

8054



C

8028



B

7970

McCALL 7970—Ladies' and Misses' Dress. Price, 45 cents. Cut in 8 sizes, 12, 14, 16, 18, 36, 38, 40, 42. Size 36, View A, $4\frac{3}{8}$ yds. 35 or $3\frac{7}{8}$ yds. 39 ins. wide, contrasting, 1 yd. 35 or 39 ins. wide; View B, $3\frac{1}{2}$ yds. 39 ins. wide, contrasting, $\frac{3}{8}$ yd. 39 ins. wide. Width, about $1\frac{3}{4}$ yds.

McCALL 8028—Ladies' and Misses' Dress. Price, 50 cents. Cut in 8 sizes, 12, 14, 16, 18, 36, 38, 40, 42. Size 36, View A, waist, $2\frac{3}{8}$ yds. 35 or $1\frac{7}{8}$ yds. 39 ins. wide, skirt and lower sleeves, $3\frac{1}{8}$ yds. 35 or $2\frac{5}{8}$ yds. 39 ins. wide; View C, $4\frac{5}{8}$ yds. 39 ins. wide. Width, about 2 yds.