



GASP Archives - Copyright 2025  
McCall 8689 (1936) Size 40 Bust 40 Hip 43

PDF file 1 of 2:

- Envelope front / back
- One page instruction printed both sides

PDF file 2 of 2:

- Nine printed pieces

PDF file A0 format but may print A4 with Adobe tiling/poster instructions. File is left open for personal use with Adobe Illustrator/InkScape or similar. Not to be resold or featured as free on any other website.

# IMPORTANT

$\frac{3}{8}$  inch is allowed on all seam-edges. All seams are indicated by broken lines; all cutting lines by continuous double lines. A narrow margin surrounds each pattern piece, making it easier to cut accurately. **Cut pattern and material together through the white center of the double line. The margin falls away as you cut through pattern and material.** Every mark is important for the construction, so before removing the pattern from the material, mark carefully with tracing wheel, tailor's chalk or thread markings.

United States Patents Nos. 1,387,723 and 1,527,518. Foreign Patents and Pending United States and Foreign Applications. Copyright 1936. by The McCall Co.

# MCCALL

P R I N T E D P A T T E R N



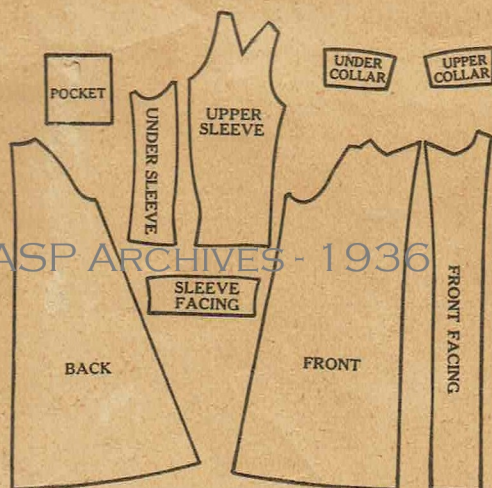
GASP ARCHIVES - 1936

8689 SIZE 40  
Ladies' Misses' Coat 45"



**M. ALL PRINTED PATTERN No. 8689 9 Pieces**

Traduction Française sur le patron. La Traducción en Español en el patron.

The Pattern with the  
Printed Cutting Lineincluding  
**CUT AND SEW  
GUIDE**

- I How to adjust this pattern to your measurements
- II Cutting layouts for this size
- III Assembling and sewing guide
- IV Finishing details

**Cut through the white center of the double cutting lines. Sew on broken lines.**

MATERIAL REQUIRED	Sizes	12	14	16	18	36	38	40	42	
35 Inch Material (With nap) .....		4 $\frac{3}{8}$	4 $\frac{5}{8}$	4 $\frac{3}{4}$	5	5	5	5	5 $\frac{1}{8}$	yds.
35 " " (Without nap) .....		4 $\frac{1}{8}$	4 $\frac{1}{4}$	4 $\frac{3}{8}$	4 $\frac{5}{8}$	4 $\frac{5}{8}$	4 $\frac{3}{4}$	4 $\frac{3}{4}$	4 $\frac{7}{8}$	"
39 " " " " .....		3 $\frac{7}{8}$	3 $\frac{7}{8}$	4	4 $\frac{1}{4}$	4 $\frac{1}{4}$	4 $\frac{3}{8}$	4 $\frac{1}{2}$	4 $\frac{1}{2}$	"
54 " " (With or without nap) .....		2 $\frac{3}{4}$	2 $\frac{7}{8}$	3	3 $\frac{1}{8}$	3 $\frac{1}{8}$	3 $\frac{1}{4}$	3 $\frac{1}{4}$	3 $\frac{3}{8}$	"
Lining, 39 Inch Material .....		2 $\frac{1}{2}$	2 $\frac{1}{2}$	2 $\frac{5}{8}$	2 $\frac{3}{4}$	2 $\frac{3}{4}$	3	3 $\frac{1}{8}$	3 $\frac{1}{4}$	"

**CORRESPONDING BODY MEASUREMENTS**

Bust .....	30	32	34	36	36	38	40	42	ins.
Hip (7" below natural waistline) .....	33	35	37	39	39	41	43	45	"
*Finished length from back of neck, about .....	39 $\frac{1}{2}$	40 $\frac{1}{2}$	41 $\frac{1}{2}$	41 $\frac{1}{2}$	42	42	42	42 $\frac{1}{2}$	"
Width at lower edge, about .....	2 $\frac{1}{8}$	2 $\frac{1}{4}$	2 $\frac{1}{4}$	2 $\frac{3}{8}$	2 $\frac{3}{8}$	2 $\frac{3}{8}$	2 $\frac{1}{2}$	2 $\frac{1}{2}$	yds.

**SUGGESTED MATERIALS**

Knitted Fabrics      Corduroy      Novelty Woolens  
 Velveteen      Linen      Novelty Cottons  
 Made from cotton, wool, rayon and other synthetic fibers.



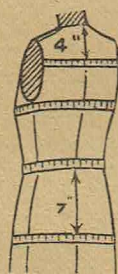
# McCALL CUT AND SEW GUIDE

8689

SIZE 40

STANDARD  
BODY MEASUREMENTS  
FOR THIS SIZE

BUST MEASURE . . . 40  
WAIST MEASURE . . 34  
HIP MEASURE . . . 43  
ACROSS BACK . . . 15½

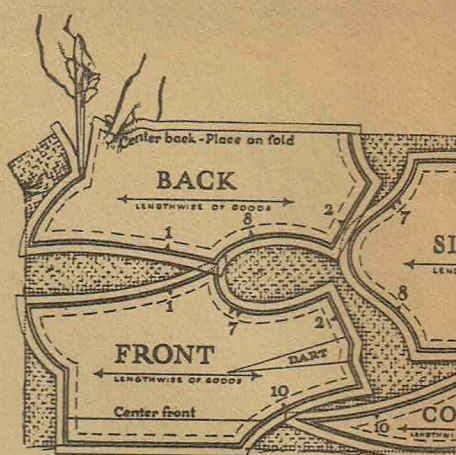


- I How to adjust this pattern to your measurements
- II Cutting layouts for this size
- III Assembling and sewing guide
- IV Finishing details

- I Comment adapter le patron à vos mesures.
- II Comment il vous faut disposer le patron pour tailler ce modèle.
- III Guide pour l'assemblage et la confection du vêtement.
- IV Finissage des détails.

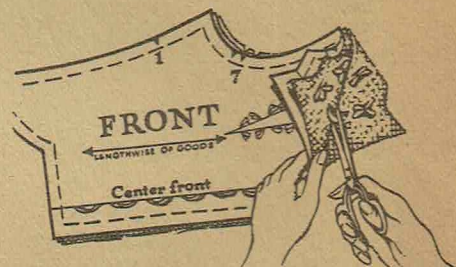
- I Cómo se ajusta este patrón a sus medidas.
- II Divisiones para el corte de este tamaño
- III Confección y guía para la costura
- IV Detalles para el acabado

## HOW TO CUT



Cut pattern and material through the white center of the double line. Do not cut off the margin before cutting material. The margin falls away as you cut through pattern and material.

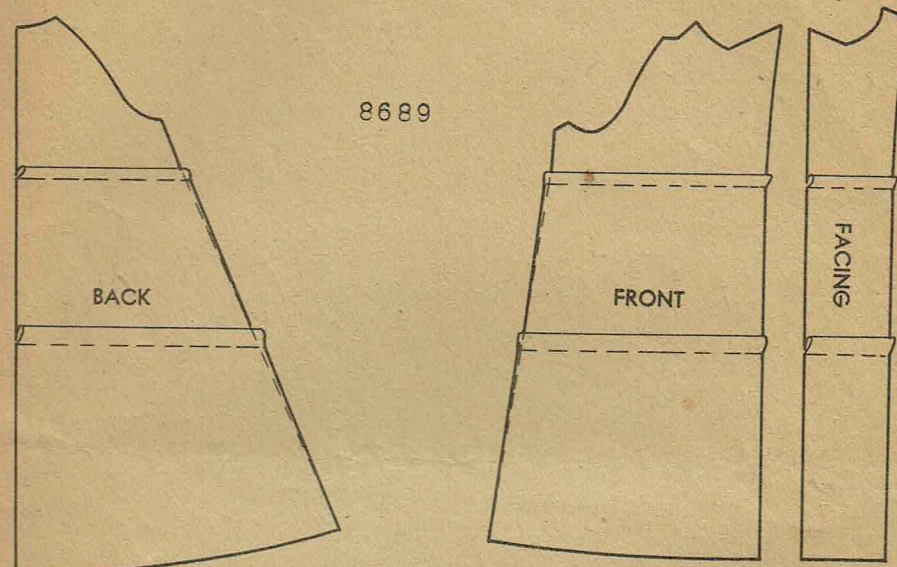
## HOW TO MAKE TAILOR'S TACKS



Make tailor's tacks before removing the pattern after garment is cut. With double thread, baste through pattern and both layers of material, forming loops. Clip each loop so as to be able to remove the pattern. Then raise the upper layer of the material slightly and clip through center of threads as illustrated. A tracing wheel may be used on hard cotton materials.

## I. HOW TO ADJUST THIS PATTERN TO YOUR MEASUREMENTS

Before cutting, compare your measurements with the standard measurements for this size, and if necessary, adjust the pattern as shown below.



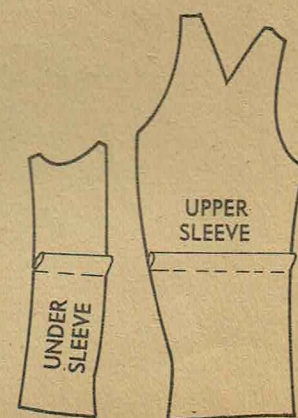
### HOW TO SHORTEN OR LENGTHEN PATTERN

To shorten -- Make corresponding tucks across pattern above the waistline and below the hip as illustrated.

To lengthen -- Slash and spread in the same places.

### FOR SLEEVE

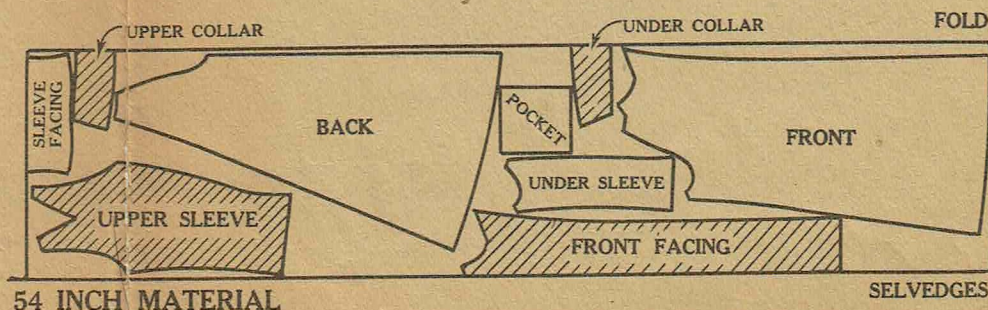
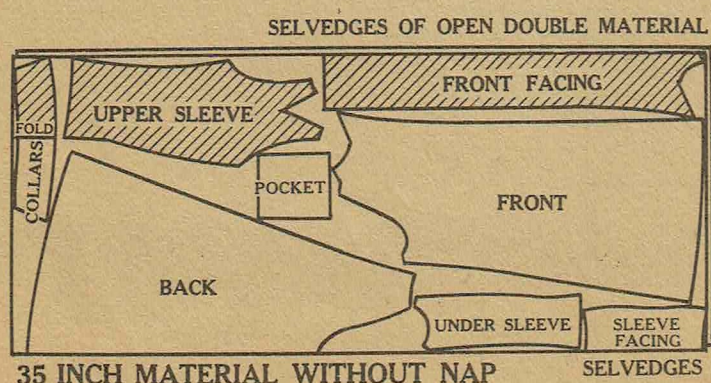
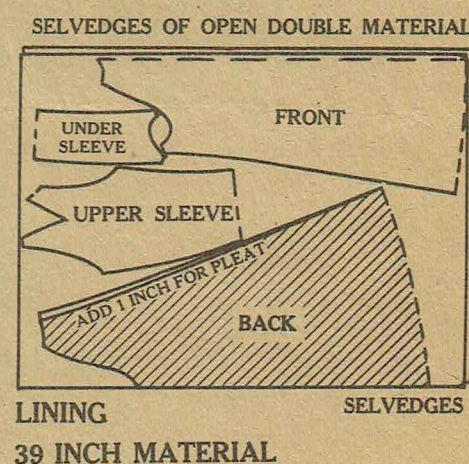
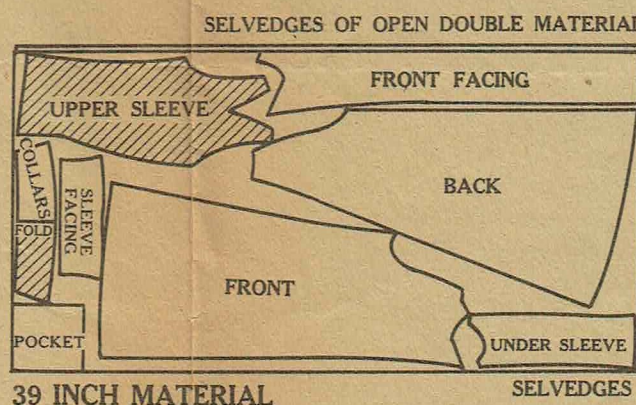
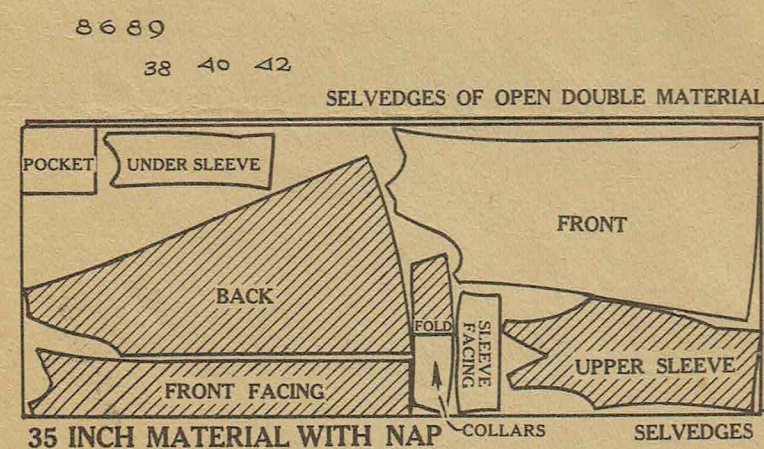
Shorten or lengthen pattern at elbow.



## II. CUTTING LAYOUT FOR THIS SIZE

The diagrams below show how to lay the pattern pieces on the material. Pin the pattern pieces on material and cut\* pattern and material together through the white center of the double line. The margin falls away as you cut through pattern and material. \*See diagram above on "How to Cut."

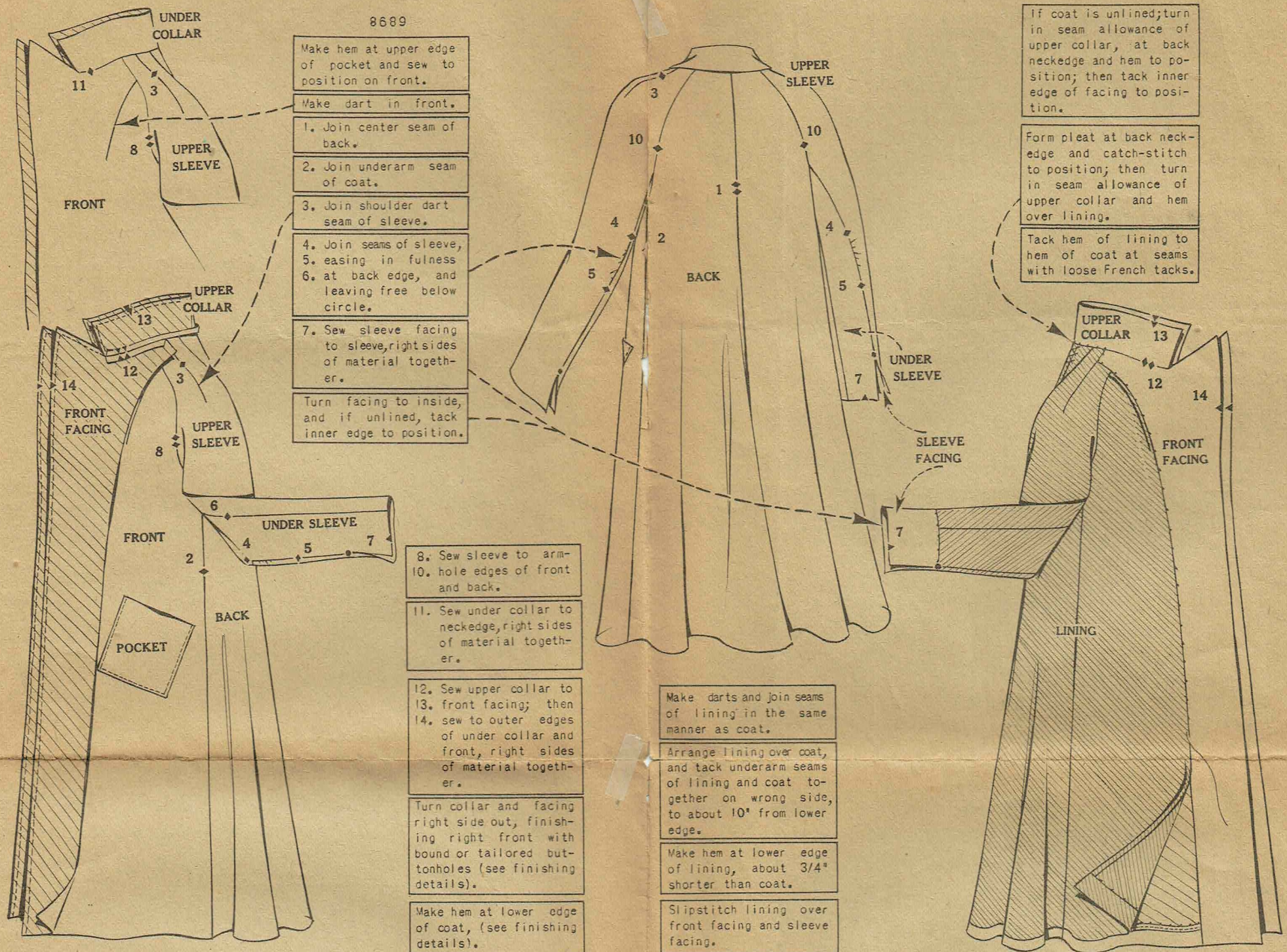
**IMPORTANT** — The pattern pieces, shaded in the diagrams, are to be laid face down.



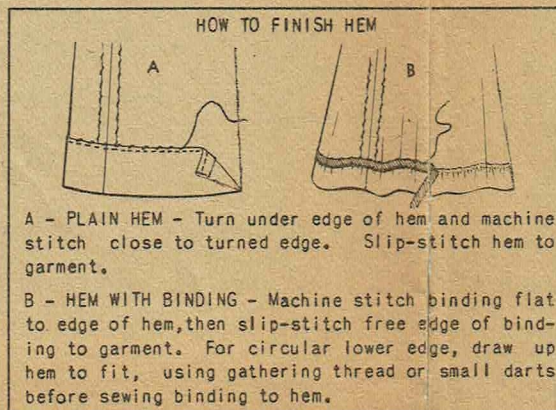
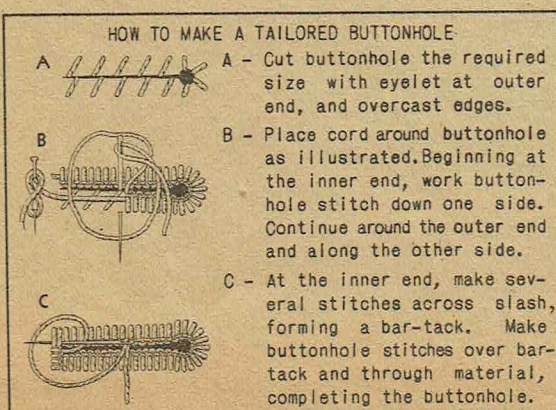
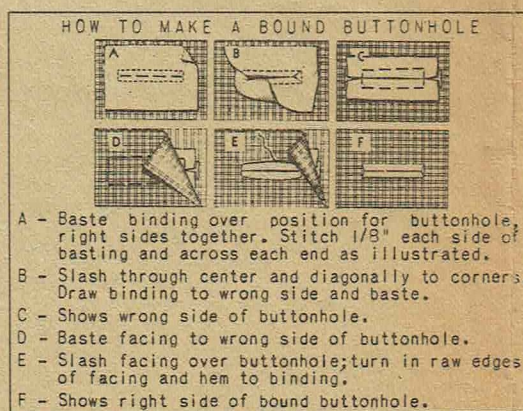
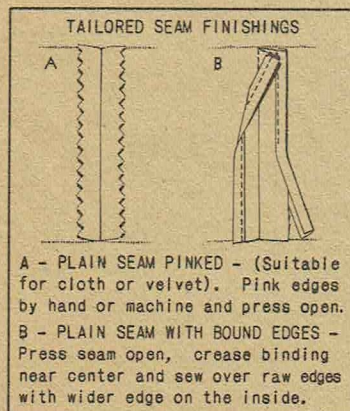


# III. ASSEMBLING AND SEWING GUIDE

Join the seams by matching the corresponding notches. The notches in the pattern are numbered in the order in which the seams should be joined.



# IV. FINISHING DETAILS



**HOW TO PRESS (including velvet, etc.).**

Press seams and parts of garment on wrong side of material. Do not leave all the pressing until the garment is finished, but press each seam after it is joined.

For silks, cottons, or synthetic fabrics, use a warm iron, not hot. To press crinkled silk or cotton materials, place over a folded turkish towel or soft pad.

For woollens, lay a press cloth on material and dampen with a sponge; then press, lifting up press cloth quickly to allow steam to escape. Use a hot iron.

NOTE: When it is necessary to press on right side of material, as for a patch pocket, applied bands, etc., place a heavy dry press cloth over material; then press.

**FOR VELVET**

To press seams, stand a hot iron end up. With seams opened, hold material taut and rub seams over the edge of the iron until they are flat.

To steam velvet, place a wet cloth over an upright hot iron and pass wrong side of velvet over the steaming press cloth, lightly brushing up the nap at the same time.